



Creating ergonomic spaces
that offer the
**comfort of home,
at the office.**

Awards & Recognition



Godrej Interio received
"CII-Exim Bank Award"
 for Business Excellence in 2017



Godrej Interio Vikhroli Plants received
"Energy Efficient Unit Award"
 at the 17th CII National Energy Summit.



Godrej Interio Shirwal Plant received
"Excellent Energy Efficient Unit Award"
 at the 17th CII National Energy Summit.



Godrej Interio received
"Greenco Best Practices Award"
 at the 17th CII National Energy Summit.



Godrej Interio received
"Super Brand" award at the Super
 Brands event held in Delhi.



Godrej Interio was awarded
 top rank in the furniture category,
"Experts' Choice Award 2018"



World's Greatest Brands & Leaders
 2016-17 – Asia & GCC



SEATING PORTFOLIO



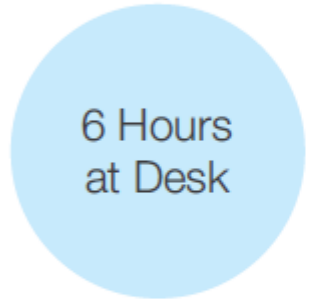
- Executive Chairs
- Office Chairs
- Multipurpose Chairs
- Auditorium Chairs

Keep Moving!

RESEARCH



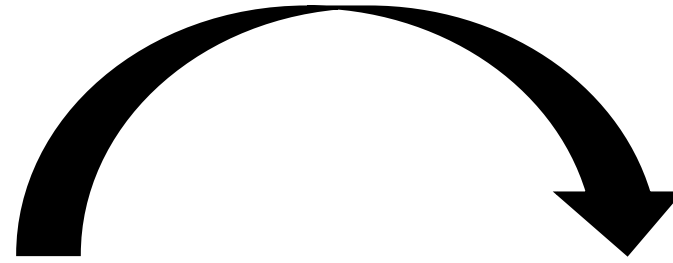
Time that 64% employees spend at desk, in meetings and conferences



68% employees work continuously at their workstations



75% employees attend long conferences every day.



76% complained about musculoskeletal pain / discomfort in last 6 months.

44%
Single Pain Problem

56%
Multiple Pain Problem



Action – Interaction Matrix



DIMENSIONS and VARIATIONS



DIMENSIONS

	Emerald High back	Emerald Mid back
Seat Depth	455 cm	455 cm
Seat Height	480 cm	480 cm
Chair Width	800 cm	800 cm
Chair Height	1035 cm	1220 cm

TEXTURES & COLOURS

LEATHER



CAMEL

TAN

BLACK

LEATHERETTE



BLACK

TOFFEE

RUBEN BLUE

PEANUT

Ace



Ace

Features

- Ace's clean design and aesthetics make it versatile enough to fit into both formal and informal office settings.
- Comes with an adjustable headrest that's cushioned and contoured to provide adequate support.
- The seat is finished with a contoured foam that provides a larger contact area and increased seating comfort.
- The saddle support PU-top adjustable armrests provide soft contours at all the touch points.
- GREENGUARD certified and with 100% VOC-free powder coating.

Measurements



All sizes in cm	Width	Depth	Height	Seat Height
3002AS (with Headrest)	75.0	75.0	109.3 - 124.4	45.5 - 55.5
3002AS	75.0	75.0	95.5 - 105.5	45.5 - 55.5
3002AC	70.5	70.5	99.0	49.0
3012AX	65.5	58.2	99.5	48.5

Colour & Material

KNITTED FABRIC SEATING



Thrill



Design Registration ©

Thrill

Features

- The Thrill chairs come with a cushioned seat and back for added luxury, comfort, and aesthetics.
- Equipped with a Central Tilt Synchro Mechanism, making it easy to lock the backrest at a comfortable recline angle.
- Comes with armrests that are height-adjustable, rotatable, and can be pushed to the front and back.
- Finished with a tapered back for increased comfort and convenience during long working hours.

Measurements



All sizes in cm	Width	Depth	Height	Seat Height
Executive HB	77.0	77.0	114.0 - 221.5	45.0 - 54.5
Executive FB	77.0	77.0	100.0 - 109.5	45.0 - 54.5
Task HB	76.1	76.1	115.0 - 225.0	46.0 - 55.5
Task FB	76.1	76.1	101.0 - 110.5	46.0 - 55.5

Colour & Material

LEATHERETTE CHAIR





Available in high-back and mid-back variants. For employees who transform corporate visions into reality.

THRILL MESH RANGE

Adjustability you can trust!

Organisations grow when members of the team trust each other and prove they are trustworthy. This is a role that Thrill Mesh chairs play well. They are flexible, adaptive and truly trustworthy.

Thrill Mesh Range, comprising Thrill Mesh Plus and Thrill Mesh, has been conceptualized as a high-performance task chair with ample back support and ease of movement integrated into the design. Mesh makes the chair more breathable.



THRILL MESH RANGE



THRILL MESH

INTRODUCING GRETA 2.0

GRETA



DIMENSIONS and VARIATIONS



Frame Options

Black, White

Seat colour Options

Royal Blue, Black, Milan Red

	With Headrest	Without
Height	114 cm – 123.5 cm	95.5 cm – 105.5 cm
Depth	76 cm	76 cm
Width	76 cm	76 cm
Seat height	43.5 cm – 54 cm	43.5 cm – 54 cm

Motion

Features

- The Motion chair's EasyFlex is an innovative system that enables the user to adopt dynamic body movements while seated.
- The unique flexing and spring back motion of this chair is a result of an evolved design construction and hi-tech compounded engineering plastics.
- The seat and back of this chair are firmly connected to the base frame and are cantilevered in a way that allows multi-dimensional movement.



Colour & Material

KNITTED FABRIC SEATING



Measurements

High Back



Visitor



All sizes in cm	Width	Depth	Height	Seat Height
High Back	76.0	76.0	99.5 - 108.8	44.5 - 53.8
Visitor	48.5	58.9	93.3	47.1



Versa Platform

Features:

- **HEIGHT ADJUSTABLE BACK:** The contoured lumbar area can be adjusted to suit your back profile by adjusting the back height
- **T-SPINE STRUCTURE:** This supports the contoured chair back, providing flexibility in the back height adjustment
- **HEIGHT ADJUSTABLE ARMS:** The wide, soft edged PU top armrests provide complete support to elbows and forearms. The height of armrests can be adjusted as per need
- **ACTIVE BIO-SYNCHRO MECHANISM:** The Active Bio-Synchro mechanism senses your body weight and tilts accordingly even as the seat glides in tandem with the back. This provides full contact and continuous support to the back in all tilt positions. The chair comes with 5 position tilt limiter
- **SEAT DEPTH ADJUSTMENT:** The seat depth adjustment helps fit different body types



Pulse Platform

- **ADJUSTABLE NECK REST:** Height as well as tilt adjustment gives perfect support to the neck while in a reclining position.
- **LUMBAR PAD ADJUSTMENT:** Multi Flex Active Lumbar support enhances user's comfort by allowing height adjustment appropriate to individual's lower back. The pad, covered with foam laminated fabric, is designed to be flexible which allows it to move with the user.
- **ARM HEIGHT ADJUSTMENT:** Gives adequate elbow support while working on the desk.
- **TWO SEAT DEPTHS:** Option of two seat depths ensures adequate comfort to users of all body types.
- **RECLINE LOCK:** Lock mechanism ensures that the chair continues to be in the locked position while reclining.

**AERO****CROSS****PRIME****ELITE**



Comfortable @ work in every space

From adding a playful tone to the office cafe to welcoming guests in the waiting areas, Shine Universal is a smart performer. Its deep broad-based seat design also makes it a great work chair for long hours. The vibrant hues available add funk to any space.

Ideal for cafes, canteens, waiting zones, guest seating, library, computer labs, activity zones.



Shine
Universal SM6 ➤

SCINTILLA HIGH CHAIR

Features:

- **UNIQUE BACK-TILT:** A unique back-tilt feature allows an upright as well as relaxed angle, thus reducing pressure on the inter-vertebral discs during long training sessions
- **MOTHER'S HUG:** Derived from the Mother's Hug, the body hugging contours comfortably supports your back
- **BROAD ARMREST:** Scratch resistant broad armrest ensures proper comfort to arms during long sitting hours
- **BRAKE CASTERS:** Brake Casters in the desklet version ensures firm grip on floor while one is seated and facilitates various room layouts unoccupied with its mobility
- Adjustable anti slide footring to suit your seated height with comfort. Turning around feature to provide more collaborative workspace.



UNWIND HIGH CHAIR

Features:

- **LIGHT AND PORTABLE:** Lightweight construction makes it easy to move around.
- **CUSHION-FRIENDLY:** Can accommodate a cushion to add to seating comfort.
- **EASY TO MAINTAIN:** Clean, flat surfaces make it easy to clean and maintain. The poly-propylene edging is in-situ injection moulded along with the desklet thereby preventing peel-off issues.



MARS



Features:

- **UPHOLSTERY:** The upholstery follows the seat and back contours through a unique stitching technique. This technique avoids glue usage over the fabric surface, thereby reducing VOC emissions.
- **AUTO SEAT TIP UP:** The seat tilts up when not in use, ensuring ease of movement between rows.
- **MECHANISM:** MARS is available with Flexi-back feature or Synchro Slide feature, ensuring the chair adjusts to the user's need.

JUPITER

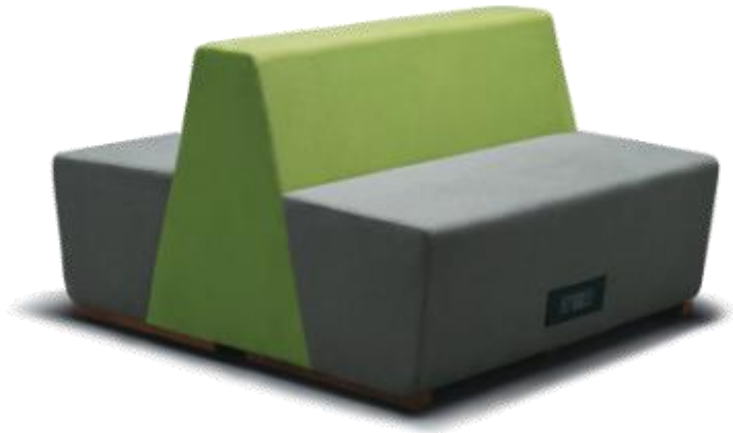
Features:

- Understructure fixed to ground by foundation expansion bolts for greater stability
- Armrest understructure is upholstered PU foam molded with MS insert and Arm tops are made of seasoned wood for more aesthetics and comfort
- Modern as well as highly functional and aesthetically appealing auditorium seating suitable for modern interiors of a modern auditorium.



SEATING

GRAPH BACK 2 BACK
SOFA



GRAPH SOFA



GRAPH BENCH



SEATING

ORBB SEAT



ORBB POUFFE



IMMERSE POD



*All prices mentioned are Basic + GST @ 18%



SEATING

ASSERT BENCH



CH VIVID



TETRIS AND TETRIS FLIP



SEATING

GREET CHAIR



OMEGA BENCH



RADIX HI STOOL



TABLES

TOPO CIRCLE



Also available as Topo Hi Circle

TOPO FACET



Also available as Topo Hi Facet

TOPO HI BITE



Also available as Topo Bite

TABLES

TOPO SQUARE



Also available as Topo Hi Square

TOPO RECTA



TABLES

ASSERT TABLE



MODESK



LOOP



Specification

Model	Width	Depth	Height
Loop	45.50	45.50	51.00

Colour Switch

Top Panel
Bottom Panel



FS11-Vivid
Cerulean +
FS72-Mink,



FS02- Dark
Tangerine +
FS72-Mink,



FS04-Denim +
FS72-Mink

CRADLE



Specification

Model	Width	Depth	Height
Cradle	56.50	33.50	51.50

Colour Switch



FS02- Dark
Tangerine +
FS72-Mink,



FS20-
Cardinal +
FS72-Mink



FS04-Denim +
FS72-Mink



DRIFT



Specification

Model	Width	Depth	Height
Drift	44.50	44.50	57.50

Colour Swatch



FS05-
Leaf
Green



FS11-
Vivid
Cerulean



FS72-Mink

TOGGLE



Specification

Model	Width	Depth	Height
Toggle	52.50	52.50	52.50

Colour Swatch



FS05-
Leaf Green +
FS72-Mink,



FS20-
Cardinal +
FS72-Mink



FS04-Denim +
FS72-Mink

PROP TABLE



Specification

Model	Width	Height
Prop Table	51.40	66.20

Godrej interio | Office Furniture

For more information, email us at ganesh.borade@businessexcellency.co.in



Business Excellency Consultants,
authorised dealer for Godrej interio